

CHARMILL

RESIDENTIAL



Abbey Road, St John's Wood NW8

£685 PW



Abbey Road



Description

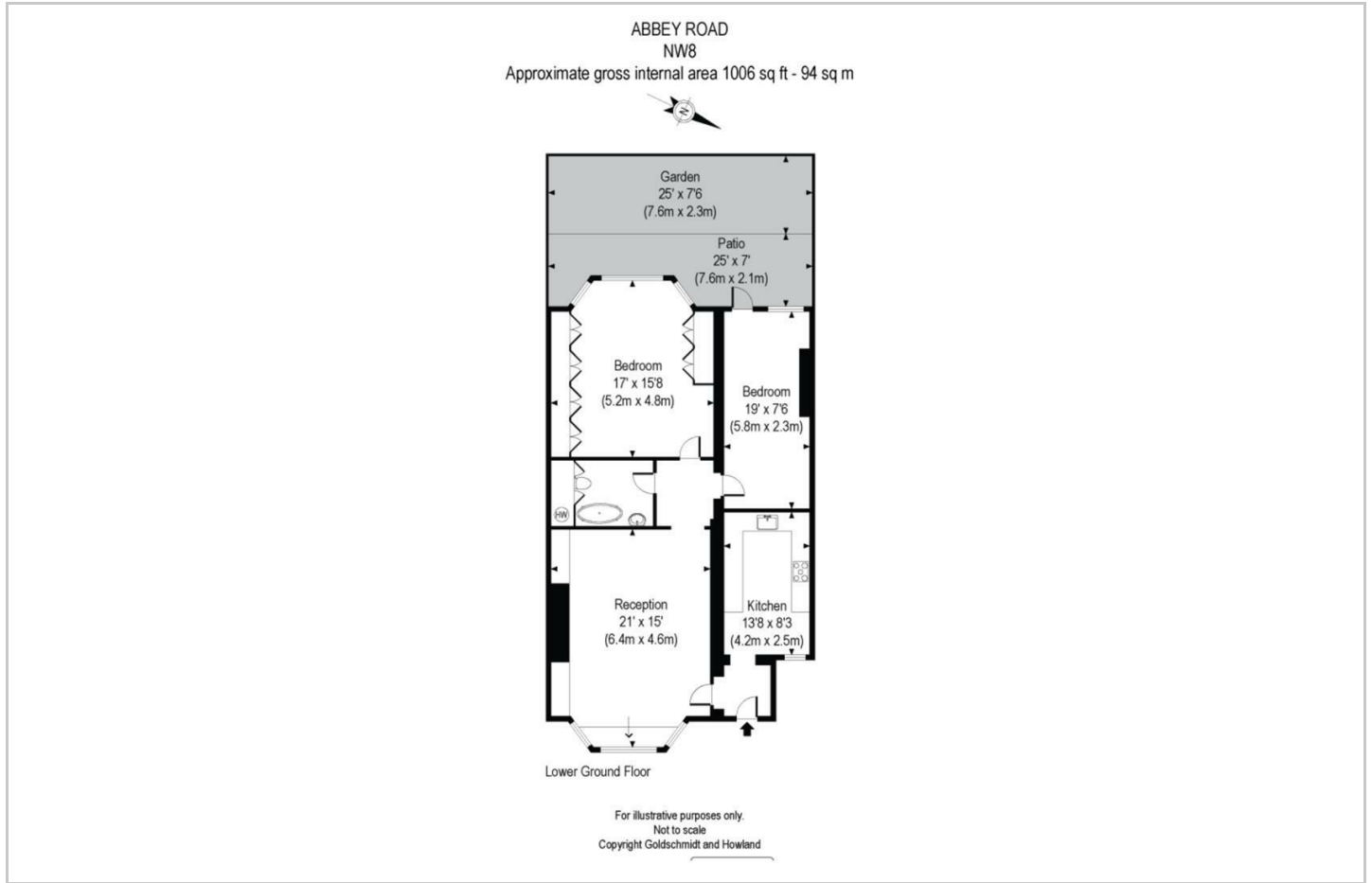
A superb two-bedroom apartment located on the famous Abbey Road, in St Johns Wood. This period conversion property comprises a fully fitted kitchen, spacious reception/dining room with wooden flooring, principal bedroom with ample storage, further double bedroom, and a family bathroom suite. The apartment further benefits from a private patio which is accessed through the second bedroom. Viewings are highly recommended.

- Two double bedrooms
- Fully fitted kitchen
- Own entrance
- Private Patio
- Wooden flooring
- Excellent location

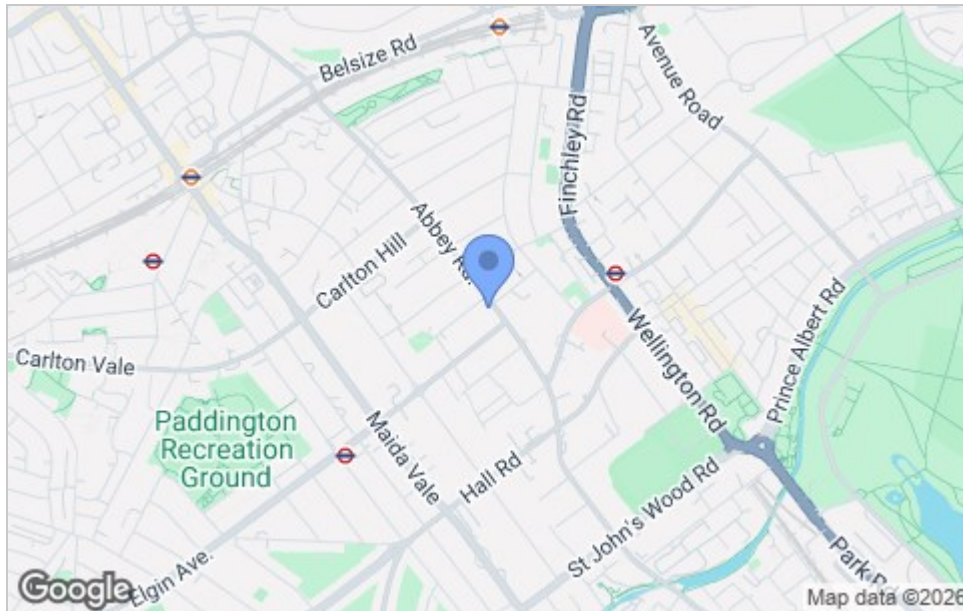




Floor Plan



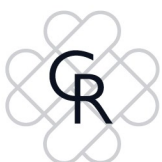
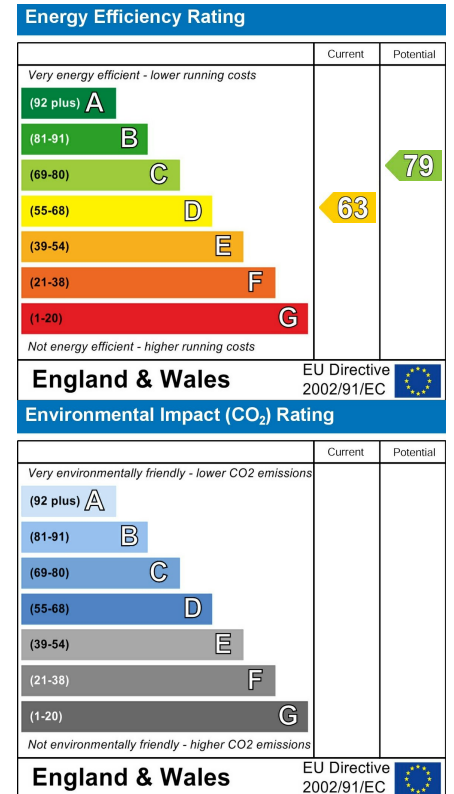
Area Map



Viewing

Please contact us on 020 7046 6275 if you wish to arrange a viewing appointment for this property or require further information.

Energy Efficiency Graph



These particulars, whilst believed to be accurate are set out as a general outline only for guidance and do not constitute any part of an offer or contract. Intending purchasers should not rely on them as statements of representation of fact, but must satisfy themselves by inspection or otherwise as to their accuracy. No person in this firm's employment has the authority to make or give any representation or warranty in respect of the property.

020 7046 6276 • lettings@chamillresidential.co.uk • 51 Maida Vale, Little Venice, London W9 1SD
chamillresidential.co.uk